



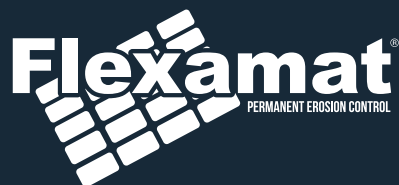
A Permanent Base

Learn How Flexamat® Can Create a Stable Driving Surface

Flexamat® is a permanent erosion control mat utilized for stabilizing slopes, channels, low water crossings, inlet/outlet protection, and shorelines. It consists of concrete blocks (6.5" x 6.5" with a 2.25" profile) locked together and embedded into a high strength geogrid. There is 1.5" spacing between the blocks that gives the mat flexibility and allows for optional vegetation growth. The mat is packaged in rolls, making transporting and installing **Flexamat®** efficient.



Up to 4800 square feet of material can ship on one truckload.



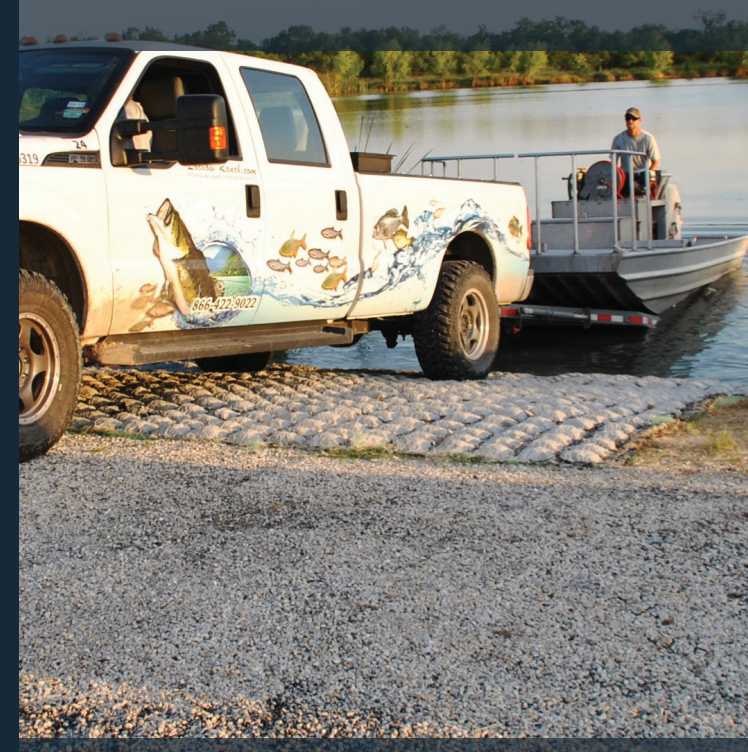
web: www.Flexamat.com
email: info@Flexamat.com
phone: 513-772-6689

Motz Enterprises, Inc.
3153 Madison Road
Cincinnati, OH 45209



Drivable Surfaces

Maintaining The Natural Environment



Immediate High Performance
Permanent Vegetated Solution
Easy Maintenance
Simple, Fast Installation
Safe for Pedestrians and Wildlife



BENEFITS OF Flexamat®

Permanent Erosion Control

- Durable – 5000 PSI concrete blocks
- Allows infiltration of storm water
- Simple installation
- Stable surface
- Environmentally friendly
- May be installed underwater
- Versatile uses
- Gain more usable land
- Reduce heat island
- Performs in extreme climates



67,000 lbs loaded Mack Truck - Toronto, Canada.

Drivable Surfaces Erosion Protection



Owens Lake, CA - Soft lake bottom support.

Flexamat® ensures a stable driving surface for access roads, boat ramps, low water crossings and parking areas. **Flexamat®** is extremely durable, due to it's make up of 5000 PSI concrete blocks which are re-enforced with a high strength geogrid. The space between the blocks allows for the infiltration of storm water.

The mat is permanently interlocked with the high strength geogrid and is pre-formed and packaged in rolls. The installation of **Flexamat®** is efficient and can be completed under water.

Flexamat® can be used as a vegetated driving surface or it may be infilled with crushed stone. The blocks create a stable, non slippery surface that provides traction when walking or driving across.



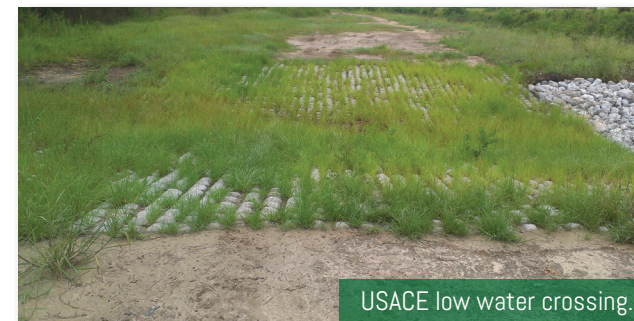
Boat ramp.



Gravel infill for residential driveway.



Access road to high school stadium.



USACE low water crossing.

Contact Us Today! 513-772-6689

web: www.Flexamat.com email: info@Flexamat.com