



Permanent Erosion Control

Learn How Flexamat® Is The Best Permanent Erosion Solution!

Flexamat® is a permanent erosion control mat utilized for stabilizing slopes, channels, low water crossings, inlet/outlet protection, and shorelines. It consists of concrete blocks (6.5" x 6.5" with a 2.25" profile) locked together and embedded into a high strength geogrid. There is 1.5" spacing between the blocks that gives the mat flexibility and allows for optional vegetation growth. The mat is packaged in rolls, making transporting and installing **Flexamat®** efficient.



Up to 4800 square feet of material can ship on one truckload.



web: www.Flexamat.com
email: info@Flexamat.com
phone: 513-772-6689

Motz Enterprises, Inc.
3153 Madison Road
Cincinnati, OH 45209



Energy Erosion Protection

Drainage Solutions for Solar Parks



Immediate High Performance
Permanent Vegetated Solution
Easy Maintenance
Simple, Fast Installation
Safe for Pedestrians and Wildlife

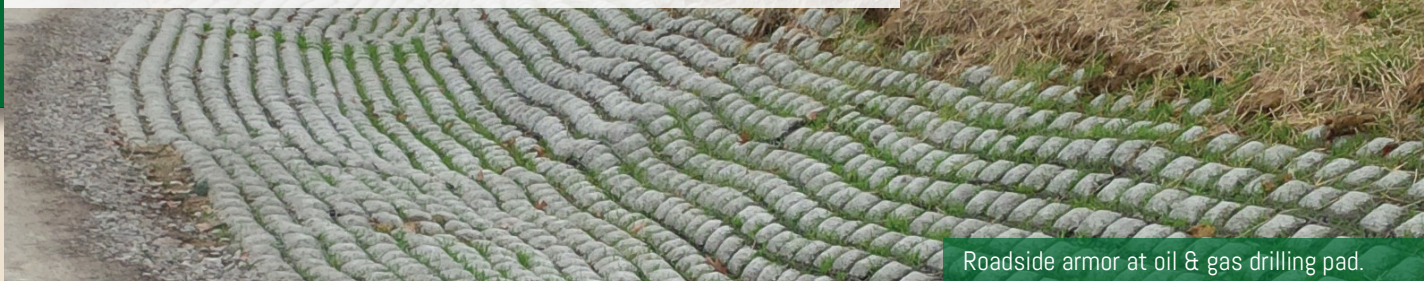


BENEFITS OF Flexamat®

Permanent Erosion Control

- High performance the moment it's installed – Un-vegetated capabilities, 19ft./sec. & 24 PSF
- Permanent, vegetated solution
- High capabilities – slopes as steep as 1:1
- Drivable – vehicles and machinery can drive across **Flexamat®**
- Maintenance – safely mow over **Flexamat®**
- Safety – stable footing when walking across
- Simple installation – personnel can install with their own equipment
- Reduce runoff – storm water infiltrates through **Flexamat®**
- Locked in place armored protection
- Environmentally friendly – wildlife can safely cross
- Decrease trucks on road – one truckload of **Flexamat®** covers 4800 square feet of surface area
- Installation time savings – not over excavating compared to rock

Energy Erosion Protection



Roadside armor at oil & gas drilling pad.

Within the energy industry, **Flexamat®** is the solution for a wide range of issues caused by erosion. At solar sites, **Flexamat®** provides locked in place protection for drainage around the solar panels. At oil and gas drilling pad sites, **Flexamat®** is used for armoring perimeter ditches, letdown structures, spillways, and as perimeter runoff dissipation. Pipelines are susceptible to exposure caused by erosion. **Flexamat®** is utilized as a permanent armor providing erosion protection for high pressure pipelines. At all of these sites, long term protection is necessary to protect these vital structures.

Flexamat® is an environmentally friendly solution. Wildlife can safely cross **Flexamat®**. Native vegetation thrives within **Flexamat®** and the material conforms to the natural landscape.

In a financially conscious industry, **Flexamat®** provides a cost effective solution. Many of these sites are in remote locations where shipping large quantities of material is difficult. A single truck can ship 4800 square feet of **Flexamat®**. This is a significant saving for sites off rural roads. Construction and maintenance crews of energy companies are easily and effectively able to install **Flexamat®**.



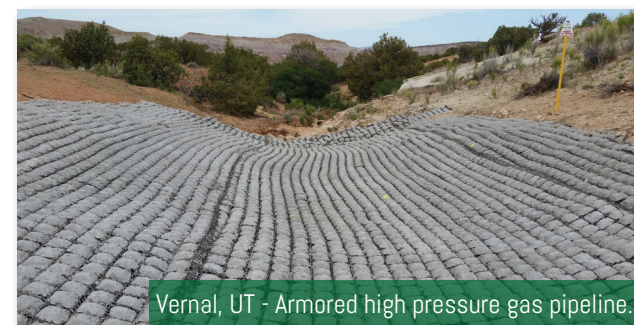
Okeana, OH - Eroding stream exposing energy pipeline.



Okeana, OH - After installation.



Vernal, UT - Exposed high pressure gas pipeline.



Vernal, UT - Armored high pressure gas pipeline.

Contact Us Today! 513-772-6689

web: www.Flexamat.com email: info@Flexamat.com